



Johannesburg
Stock Exchange

Tel: +27 11 520 7000
Fax: +27 11 520 8584

www.jse.co.za

SERVICE HOTLINE

REFERENCE NUMBER: 207/2014

3 November 2014

ECS MARGIN REPORT

Members are reminded that the PMARGD report will no longer be produced by BDA from Thursday, 30 October 2014. As ECS does the margin calculation, the margin requirements will be available via the ECS front end.

Please read the following pages for a step by step process to request the report.

Market / Service:

BDA/ECS

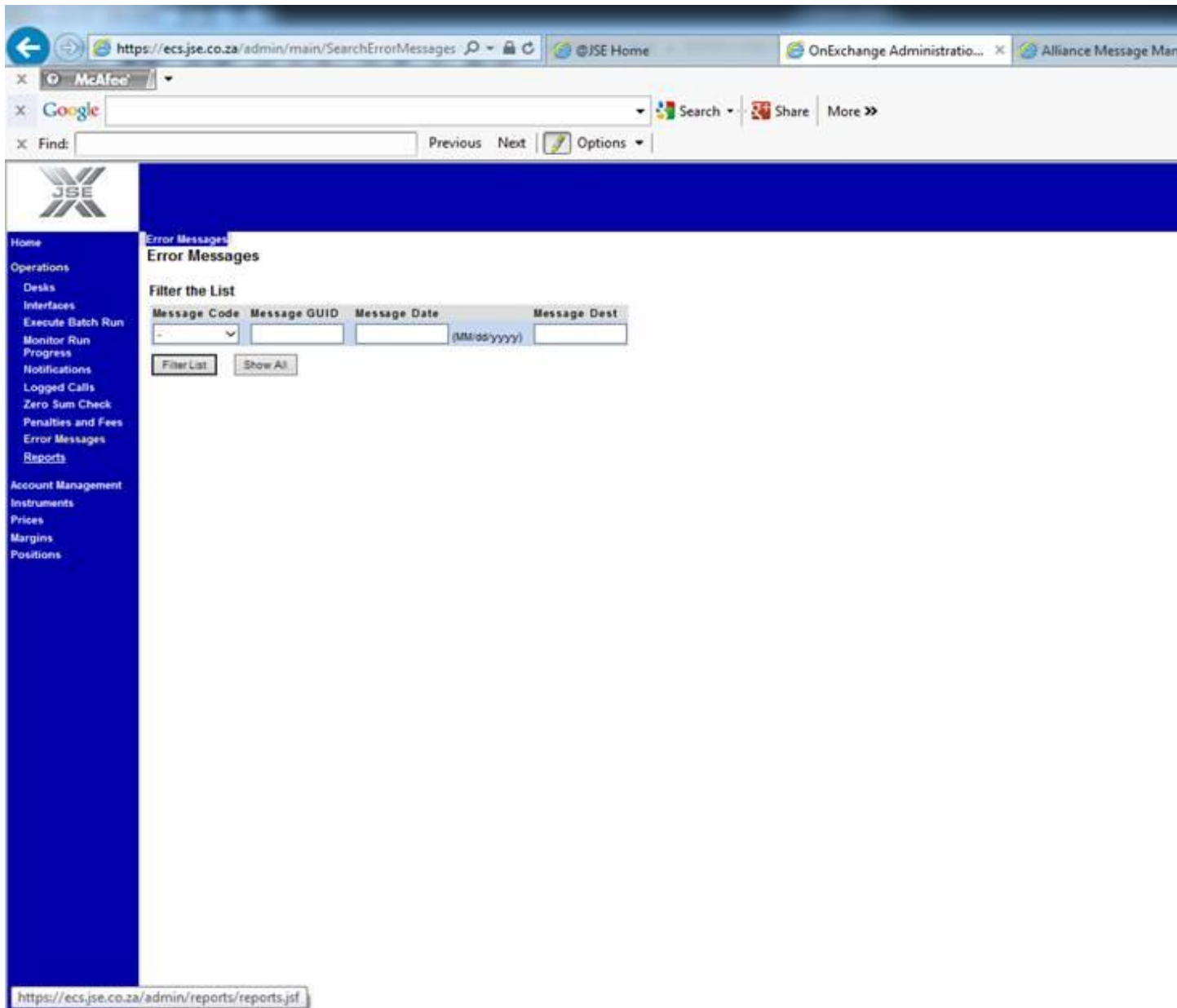
Environment(s):

Production

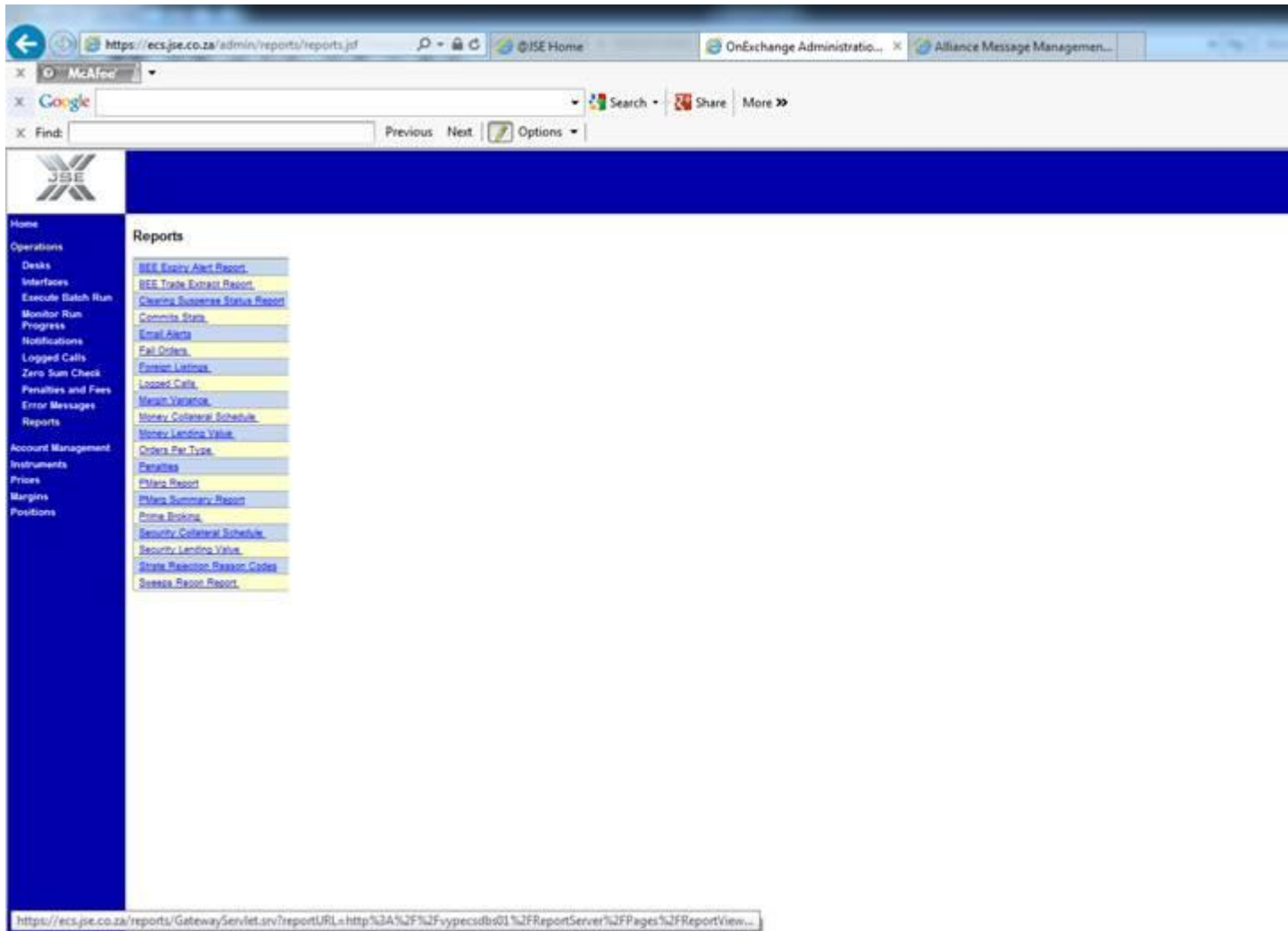
Additional Information:

If you have any queries about this announcement, please contact
+27 11 520 7777 or
customersupport@jse.co.za

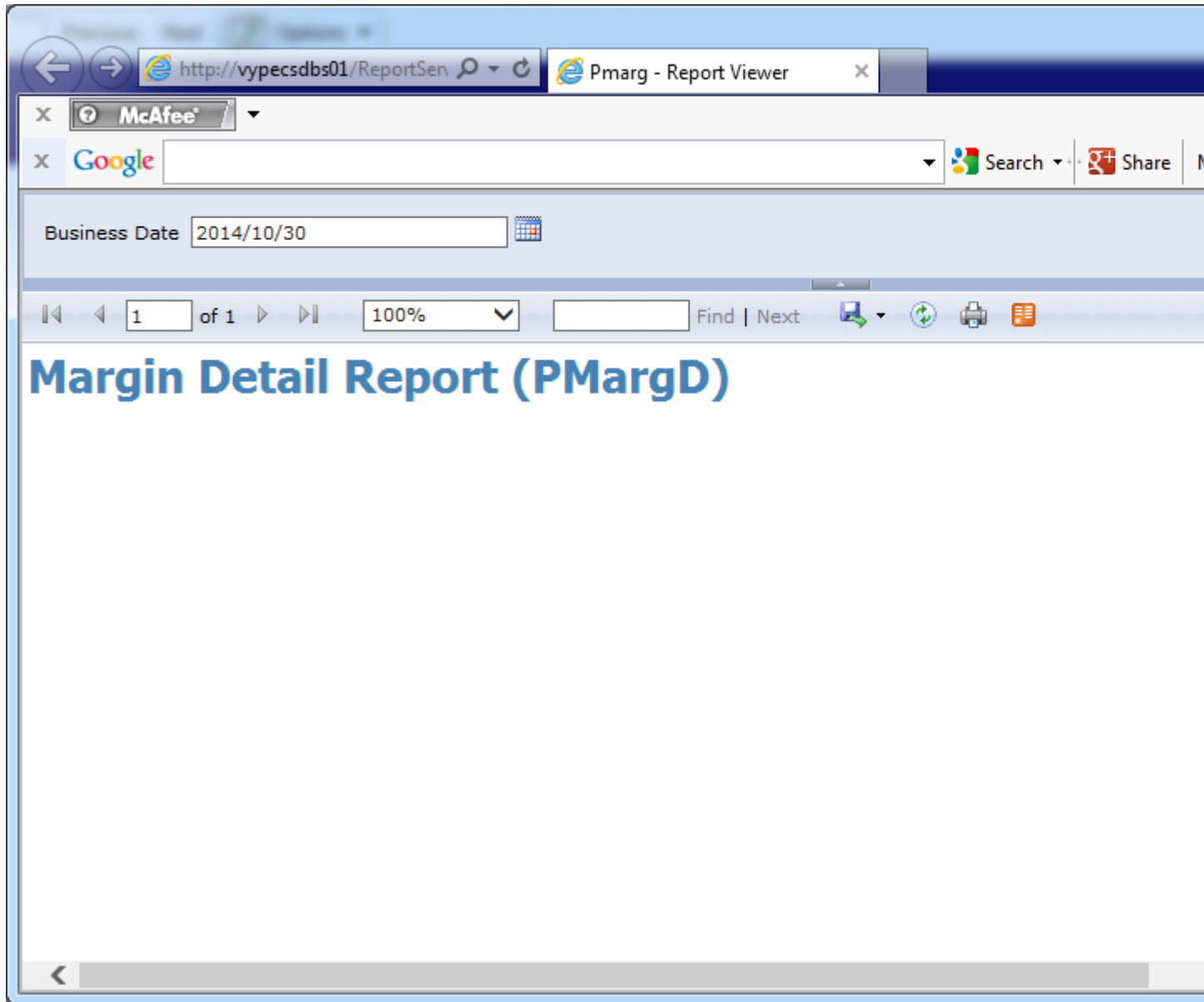
- 1) Access the ECS system.
- 2) Click Operations: Reports.



3) Click PMARG Report.



4) Select Date of report.



5) Click View report.

NOTE: For the Summary report follow the same steps as above, but click on PMARG Summary report. Select date as per above and click view report.

6) Click on **Disk** button to export, different downloadable options are available.

